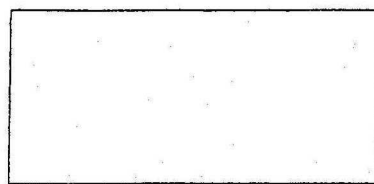
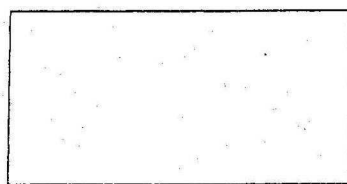
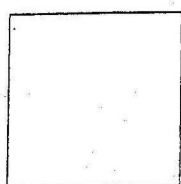
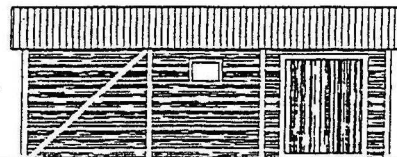
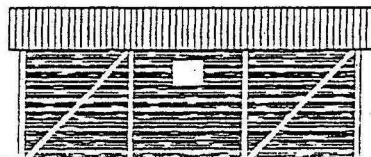
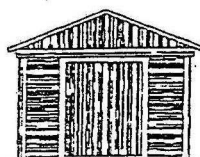


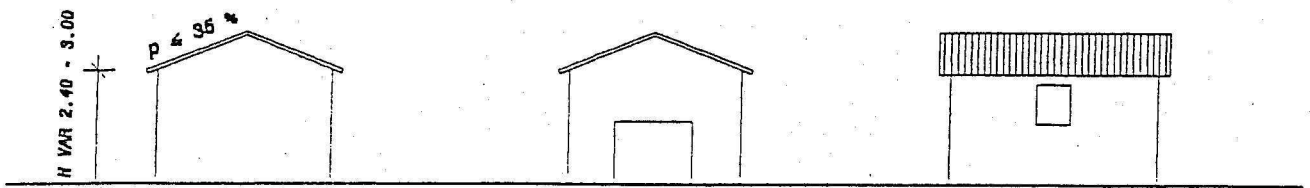
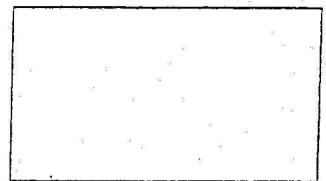
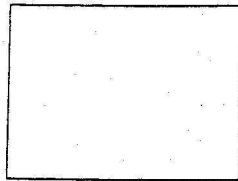
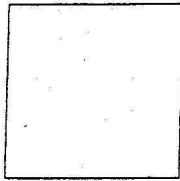
ANNESSO AGRICOLO TIPO, IN LEGNO
TIPOLOGIA A, A1, A2



H VAR 2.20 - 3.00

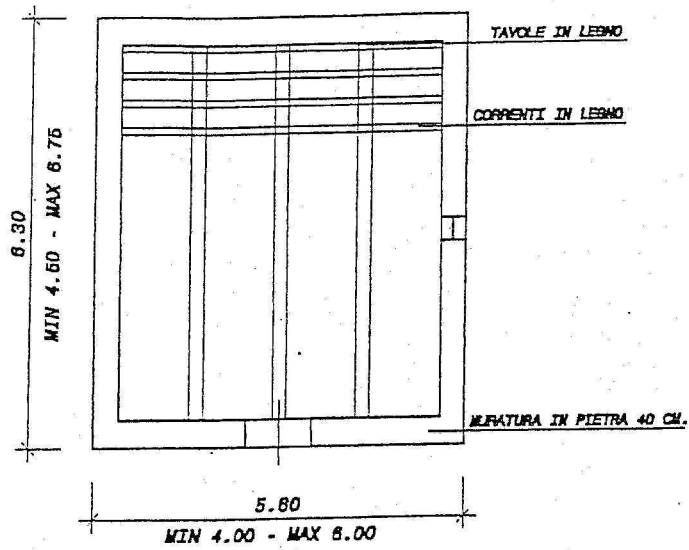


**ANNESI IN MURATURA ORDINARIA
TIPOLOGIA C, C1**

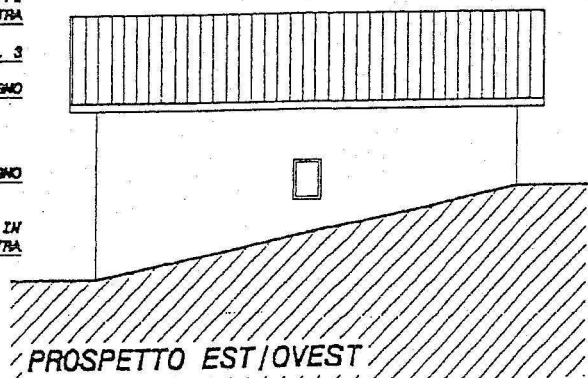
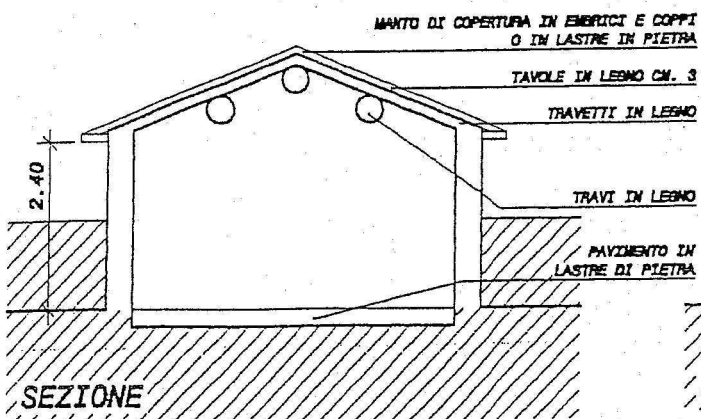
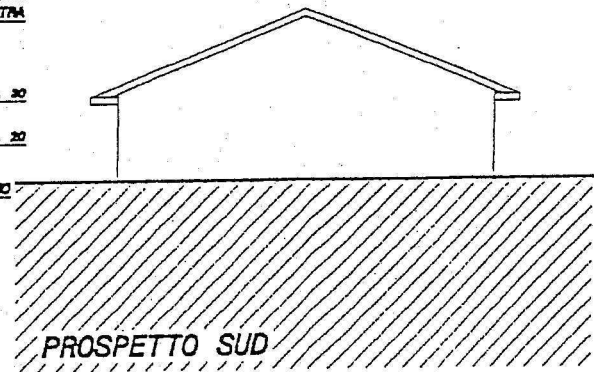
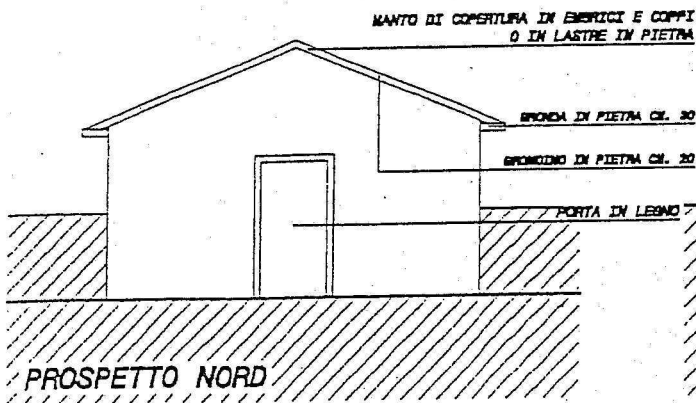
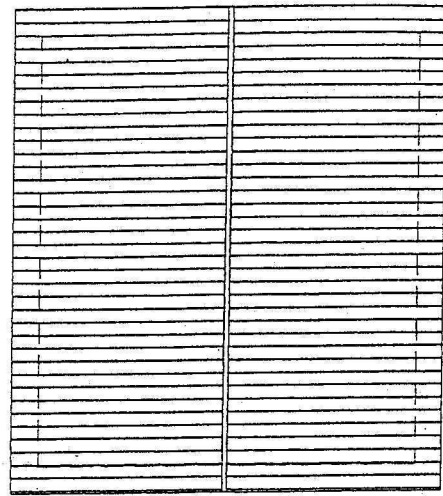


CASINI TIPO PIANO UNICO TIPOLOGIA D

PIANO TERRA - ORDITURA TETTO



PIANTA COPERTURA

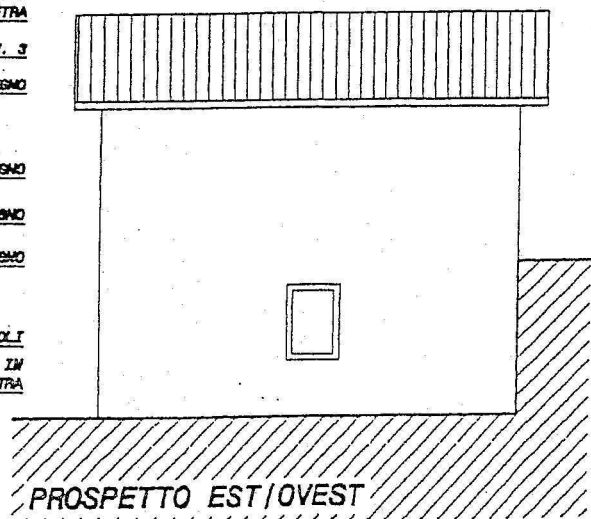
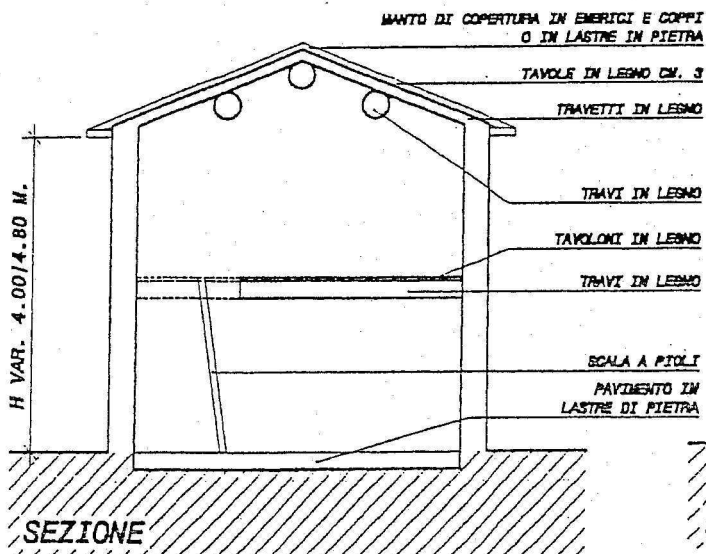
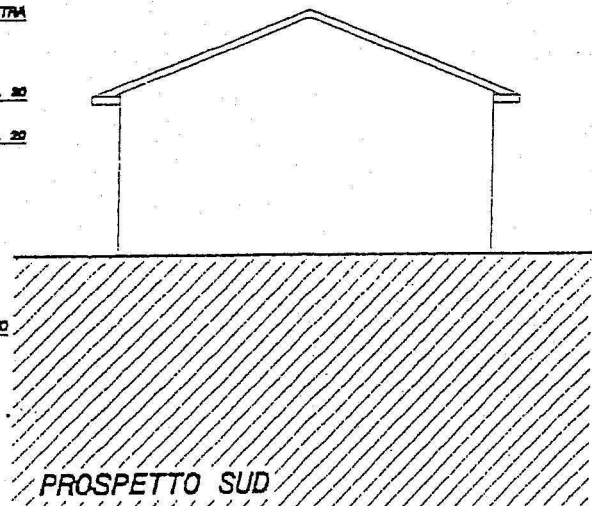
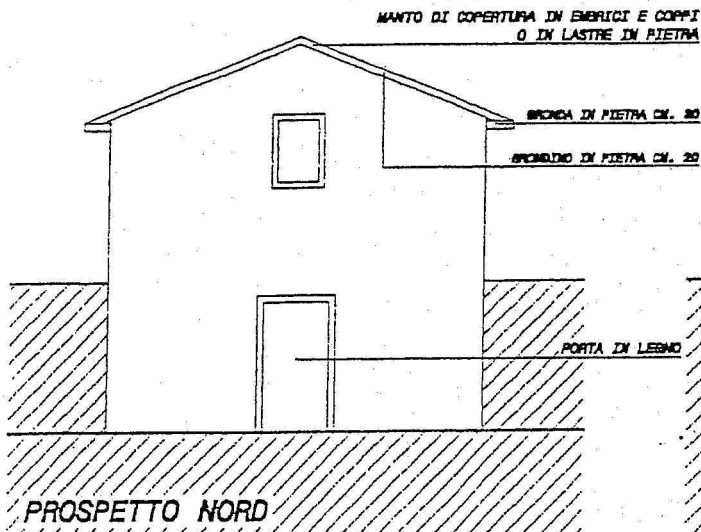
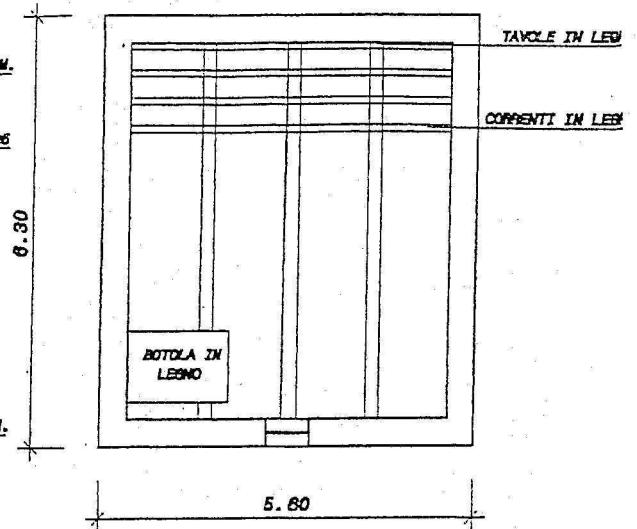
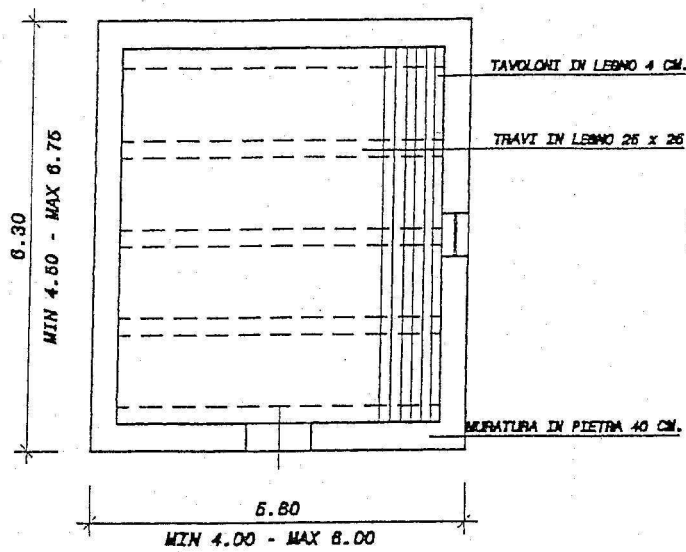


N.B.: IL RAPPORTO TRA IL LATO PIU' LUNGO E QUELLO PIU' CORTO DELLA COSTRUZIONE VARIA DA 1.10 A 1.30

CASINI TIPO DUE PIANI TIPOLOGIA D

PIANO TERRA - ORDITURA 1° SOLAIO

PIANO PRIMO - ORDITURA TETTO

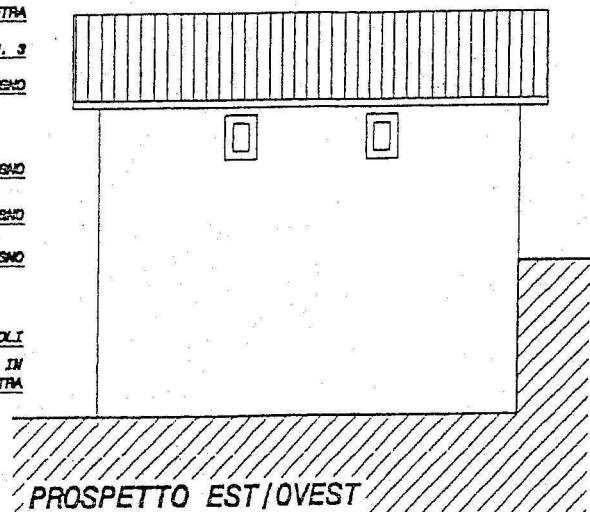
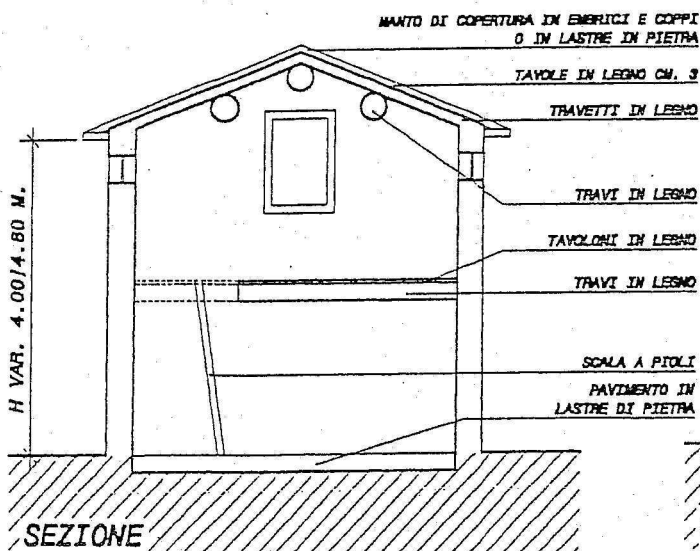
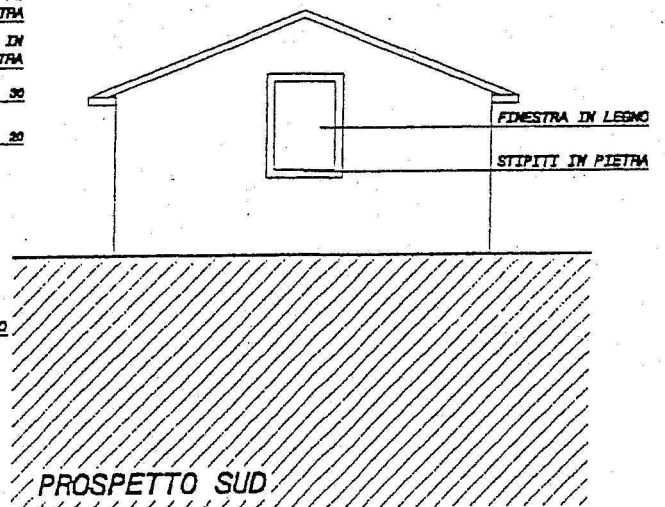
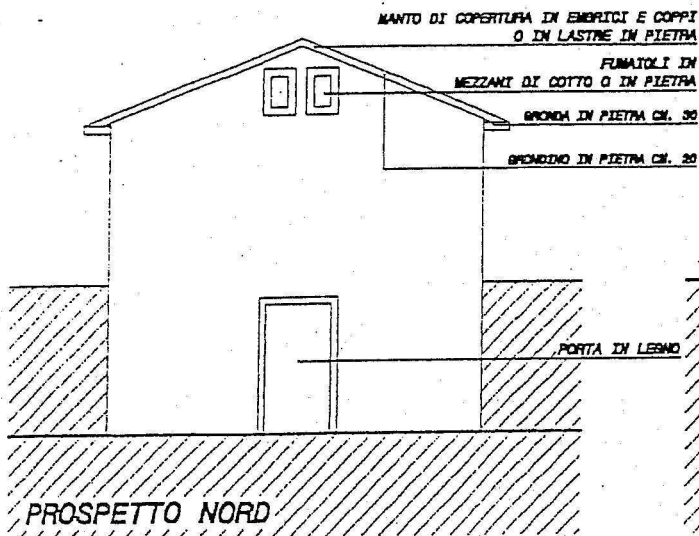
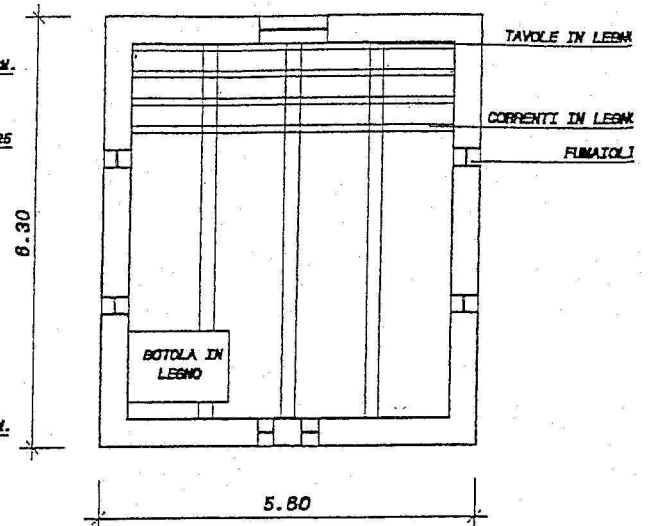
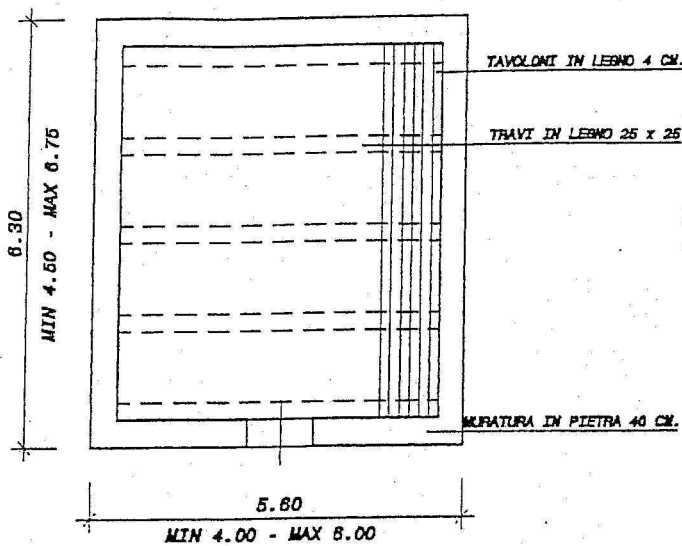


N.B.: IL RAPPORTO TRA IL LATO PIU' LUNGO E QUELLO PIU' CORTO DELLA COSTRUZIONE VARIA DA 1.10 A 1.30

SECCATOI TIPO TIPOLOGIA D1

PIANO TERRA - ORDITURA 1° SOLAIO

PIANO PRIMO - ORDITURA TETTO



N.B.: IL RAPPORTO TRA IL LATO PIU' LUNGO E QUELLO PIU' CORTO DELLA COSTRUZIONE VARIA DA 1.10 A 1.30

FORNI TIPO TIPOLOGIA D2

